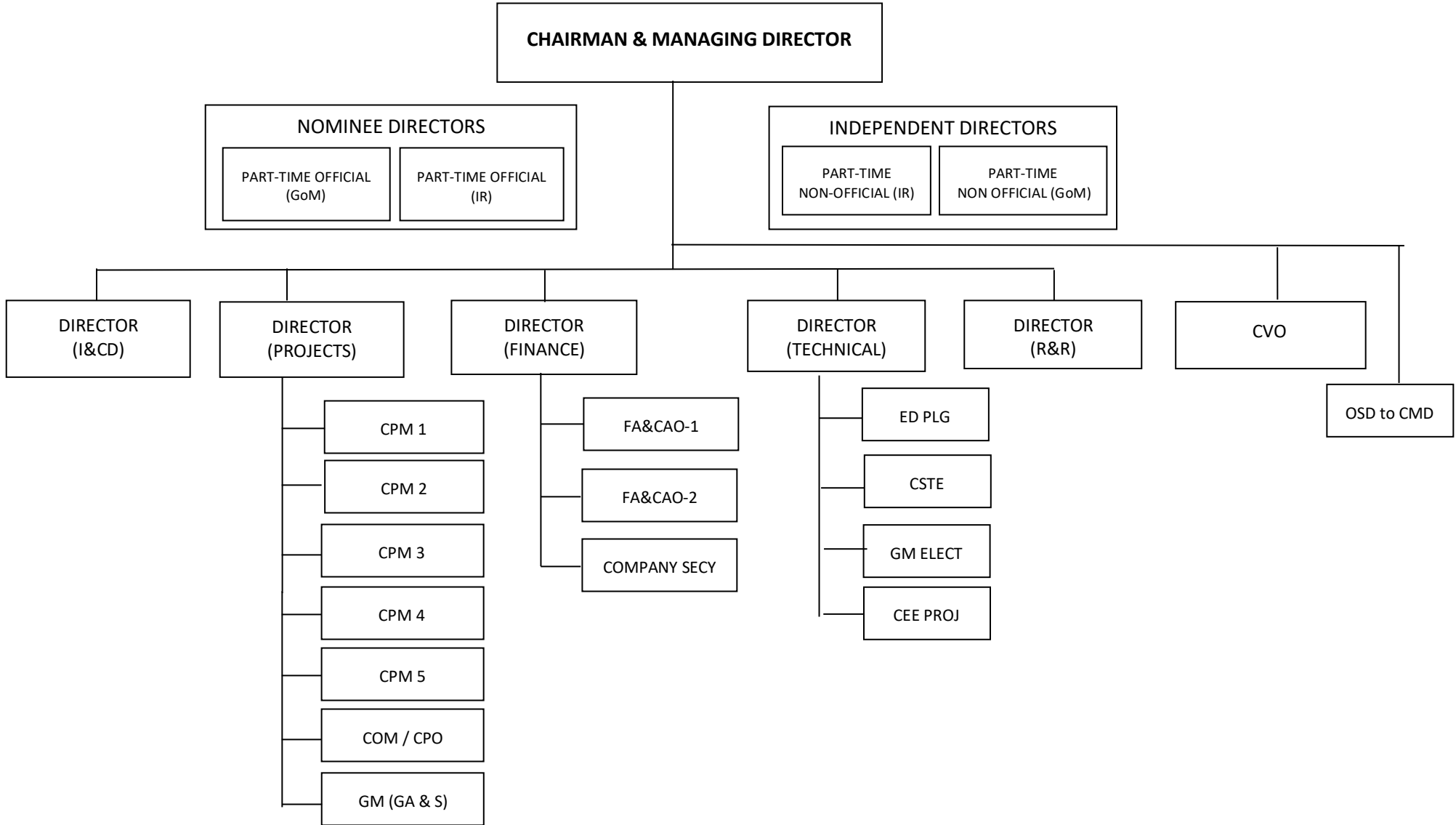


MUMBAI RAILWAY VIKAS CORPORATION LIMITED

ORGANISATION CHART - KEY PERSONNEL



ABBREVIATIONS

- GoM – Government of Maharashtra
- IR – Indian Railway
- I&CD – Infrastructure & Commercial Development
- R&R – Resettlement & Rehabilitation
- CVO – Chief Vigilance Officer
- CPM – Chief Project Manager
- COM – Chief Operations Manager
- CPO – Chief Personnel Officer
- GM (GA & S)- General Manager (General Admin & Security)
- FA&CAO – Financial Adviser & Chief Accounts Officer
- ED Plg – Executive Director (Planning)
- CSTE – Chief Signal & Tele-communication Engineer
- GM ELECT – General Manager (Electrical)
- CEE Proj – Chief Electrical Engineer (Projects)
- OSD – Officer on Special Duty