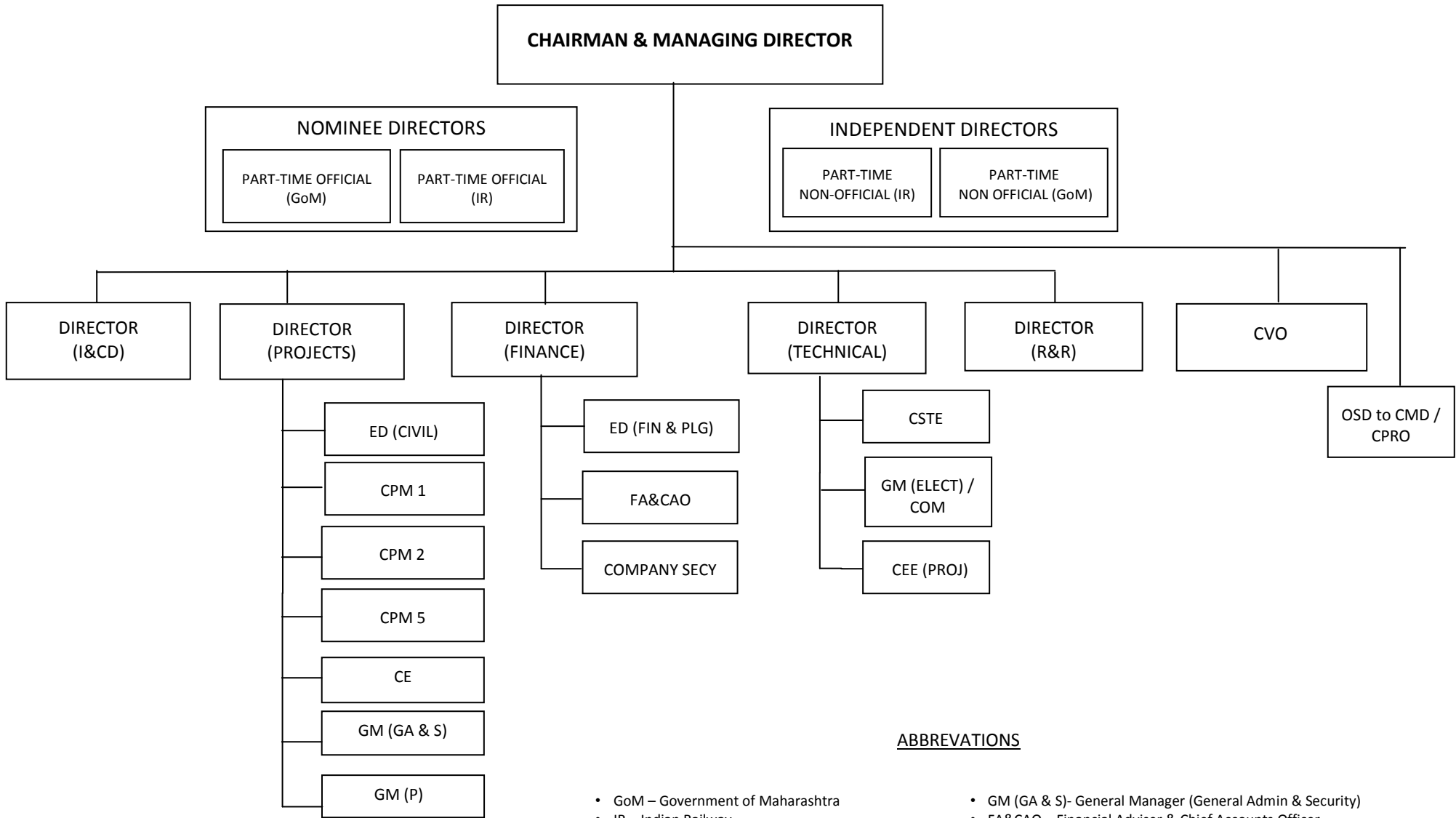


MUMBAI RAILWAY VIKAS CORPORATION LIMITED

ORGANISATION CHART - KEY PERSONNEL



ABBREVIATIONS

- | | |
|--|--|
| <ul style="list-style-type: none"> • GoM – Government of Maharashtra • IR – Indian Railway • I&CD – Infrastructure & Commercial Development • R&R – Resettlement & Rehabilitation • CVO – Chief Vigilance Officer • CPM – Chief Project Manager • COM – Chief Operations Manager • GM (P) – General Manager (Procurement) • ED (CIVIL) – Executive Director (Civil) | <ul style="list-style-type: none"> • GM (GA & S)- General Manager (General Admin & Security) • FA&CAO – Financial Adviser & Chief Accounts Officer • ED (FIN & PLG) – Executive Director (Finance & Planning) • CSTE – Chief Signal & Tele-communication Engineer • GM ELECT – General Manager (Electrical) • CEE (Proj) – Chief Electrical Engineer (Projects) • CE – Chief Engineer |
|--|--|